

components
 texture, shape and finish in endless combination

HQF02
wooden head
wooden articulated arms



sandblasted wooden base
VIN31F

HQF02C
greige wool felt
upholstered



marbled cork topped base
VIN31F

HQF02
scrim covered
head & arms



cream crackle glaze
VIN31F

HQF02
metal finish head - bronze
(also in copper, brass and aluminium)
wooden arms with fixed finger hands



cork topped base
VIN31F



male figure HQM02



headless option

shuttered concrete



cream crackle glaze



polished concrete



grey crackle glaze



HQF02
pigment stained
head & arms



grey crackle glaze
VIN31F

HQF02
crackle glaze head
white RAW fibreglass arms



shuttered concrete
BAO10

HQF02C
charcoal wool felt
upholstered
stained wooden arms



industrial felt topped
VIN31F

HQF02C
paint saturated
upholstered calico



polished concrete base
BAO12



components

drawing inspiration from architecture, interior design and traditional craft-based practices, proportion created the COMPONENTS concept; a simple male or female fibreglass body with interchangeable head, arms and hands that can be lavished with a neverending array of artisional detail to create specialness for retail VM interiors.

brutalist shuttered concrete, textured cork, felted wool, raw open weave scrim, age-old looking crackle glaze and patinaed metallics imbibe the collection with an understated elegance that belies the very simple and practical nature of the range.



wooden head



scrim covered head



concrete coated head



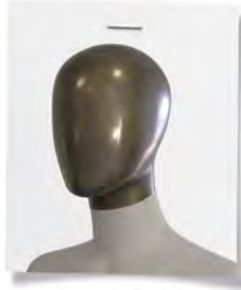
flecked spray head



pigment stained head



white RAW
fiberglass head



bronze head



copper head



brass head



aluminium head



cream crackle
glaze head



grey crackle
glaze head



charcoal wool felt
upholstered head



greige wool felt
upholstered head



paint saturated
upholstered head



crackle glaze
& metal finish
neckcaps



fixed finger hand
option for articulated
wooden arms



fully articulated
wooden hand



scrim covered hand



fiberglass hand

MEASUREMENTS

Female figure HQF02

Height	183cm	72" / 6ft
Bust	89cm	35"
Waist	63cm	25"
Hip	89cm	35"
Shoe Size	37/38	4/5
Heel Height	10cm	4"

Male figure HQM02

Height	185cm	73" / 6ft 1"
Chest	101cm	40"
Waist	75.5cm	29¾"
Inside Leg	81cm	32"
Shoe Size	9	43
Heel Allowance	2cm	

proportion > london

www.proportionlondon.com tel: +44 (0)20 7251 6943