

R O O T S T E I N



Chad
&
Coco



©2008 Adel Rootstein Display Mannequins Ltd. Photography by Chrisjesson.com





CD1A

Chad

Wig style Chad

Make-up style Chad

Also available with split toe option (CODE ST)

Mannequin Sizes

	UK	CONTINENTAL
HEIGHT	74"	188cm
CHEST	40"	102cm
WAIST	29"	74cm
COLLAR	14"	35.5cm
INSIDE LEG	34"	87cm
SHOE	9	43
SUIT	40R	50/52



CD2A

Chad

Wig style Chad

Make-up style Chad

Also available with split toe option (CODE ST)

Mannequin Sizes

	UK	CONTINENTAL
HEIGHT	74"	188cm
CHEST	40"	102cm
WAIST	29"	74cm
COLLAR	14"	35.5cm
INSIDE LEG	34"	87cm
SHOE	9	43
SUIT	40R	50/52



CD3A

Chad

Wig style Chad

Make-up style Chad

Also available with split toe option (CODE ST)

Mannequin Sizes

	UK	CONTINENTAL
HEIGHT	74"	188cm
CHEST	40"	102cm
WAIST	29"	74cm
COLLAR	14"	35.5cm
INSIDE LEG	34"	87cm
SHOE	9	43
SUIT	40R	50/52



COCO1

Coco

Wig style Rocha

Make-up style Coco

Mannequin Sizes

	UK	CONTINENTAL
HEIGHT	70 ¹ / ₂ "	179cm
BUST	32 ¹ / ₂ "	82.5cm
WAIST	24 ¹ / ₂ "	62cm
HIP	34"	87cm
SHOE	6	39
HEEL	4"	10cm

All dimensions are approximate only



COCO2

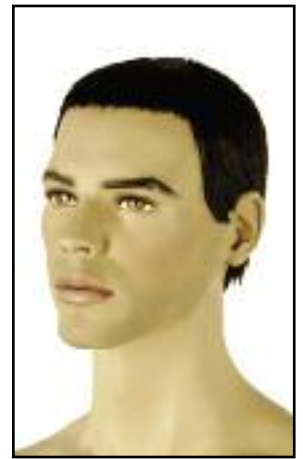
Coco
Wig style Coco
Make-up style Coco

Mannequin Sizes

	UK	CONTINENTAL
HEIGHT	70"	178cm
BUST	34"	87cm
WAIST	24"	61cm
HIP	34"	87cm
SHOE	6	39
HEEL	4"	10cm



Head (A) Chad



Head (C) Petar



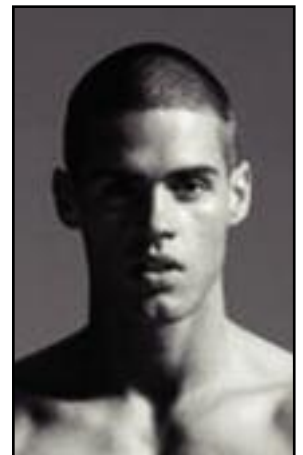
Head (B) Chad



Head (D) Petar



Head (B) Painted



Chad White



Petar



Coco Rocha

All mannequins are available with a square ankle rod as standard