

ROOTSTEIN

YOUNG AND
RESTLESS





YR2

Tomak

Wig style Hoxton

Mannequin Sizes

	UK	CONTINENTAL
HEIGHT	73"	185cm
CHEST	36"	91cm
WAIST	29"	73 cm
INSIDE LEG	33"	84cm
SHOE	9	43
HEEL	1"	2.5cm

All dimensions are approximate only



YR1

Dennis

Wig style Hoxton

Mannequin Sizes

	UK	CONTINENTAL
HEIGHT	73"	185cm
CHEST	34"	86cm
WAIST	27"	69cm
INSIDE LEG	33"	84cm
SHOE	9	43
HEEL	1"	2.5cm





YR4

Dennis

Wig style Soho

Mannequin Sizes

HEIGHT	UK 73"	CONTINENTAL 185cm
CHEST	35"	89cm
WAIST	27"	69cm
INSIDE LEG	33"	84cm
SHOE	9	43
HEEL	1"	2.5cm
SEAT HEIGHT	24" (min)	61cm (min)



YR3

Sam

Wig style Shoreditch

Mannequin Sizes

	UK	CONTINENTAL
HEIGHT	73"	185cm
CHEST	35"	89cm
WAIST	27"	69cm
INSIDE LEG	33"	84cm
SHOE	9	43
HEEL	1"	2.5cm



YR6

Brandon

Wig style Rebel

Mannequin Sizes

	UK	CONTINENTAL
HEIGHT	73"	185cm
CHEST	35"	89cm
WAIST	27"	69cm
INSIDE LEG	33"	84cm
SHOE	9	43
HEEL	1"	2.5cm





YR5

Tomak

Wig style Portobello

Mannequin Sizes

	UK	CONTINENTAL
HEIGHT	73"	185cm
CHEST	36"	91cm
WAIST	29"	73 cm
INSIDE LEG	33"	84cm
SHOE	9	43
HEEL	1"	2.5cm



YR7

Brandon

Wig style Rebel

Mannequin Sizes

	UK	CONTINENTAL
HEIGHT	73"	185cm
CHEST	36"	91cm
WAIST	29"	73 cm
INSIDE LEG	33"	84cm
SHOE	9	43
HEEL	1"	2.5cm



Dennis



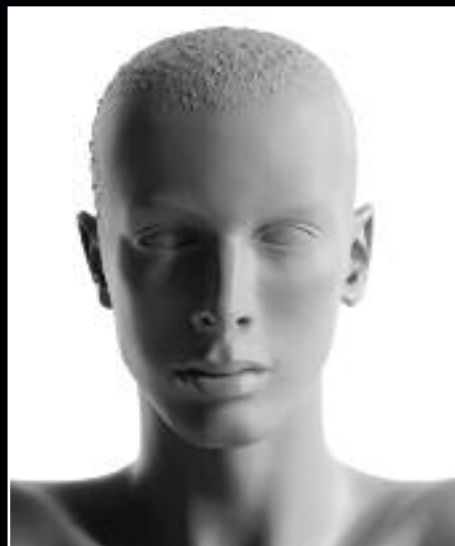
Tomak



Sam



Brandon



Sculpted Hair option (S).
Available on all poses.









©2010 Adel Rootstein Display Mannequins Ltd. Photography by Chrisjesson.com